

State Library of North Carolina Internet Information Project

by Gary Harden and Joel Sigmon

Gopher: point your gopher client at "HAL.NCDCR.GOV, Port 70"

World Wide Web: URL = <http://hal.ncdcr.gov/ncslhome.htm>

These two rather cryptic lines point the way to a worldwide collection of nearly limitless information resources. Read on to find out how to gain access to the global virtual library.

The State Library of North Carolina has embarked on a project to provide access to the abundance of information available on the global Internet. The project is administered by Gary Harden, Systems Librarian, and Joel Sigmon, Head of the Government and Business Services Branch, and is built upon the distributed information system model.

Rather than maintaining large files of data on a single computer, the distributed system utilizes data files from many different computers which are interconnected through the Internet. The system operates in a client-server mode. Client software is used on a personal computer (PC) or workstation to access data on the information servers. The State Library project utilizes two types of information servers: Gopher and World Wide Web. Though similar, they differ in significant ways.

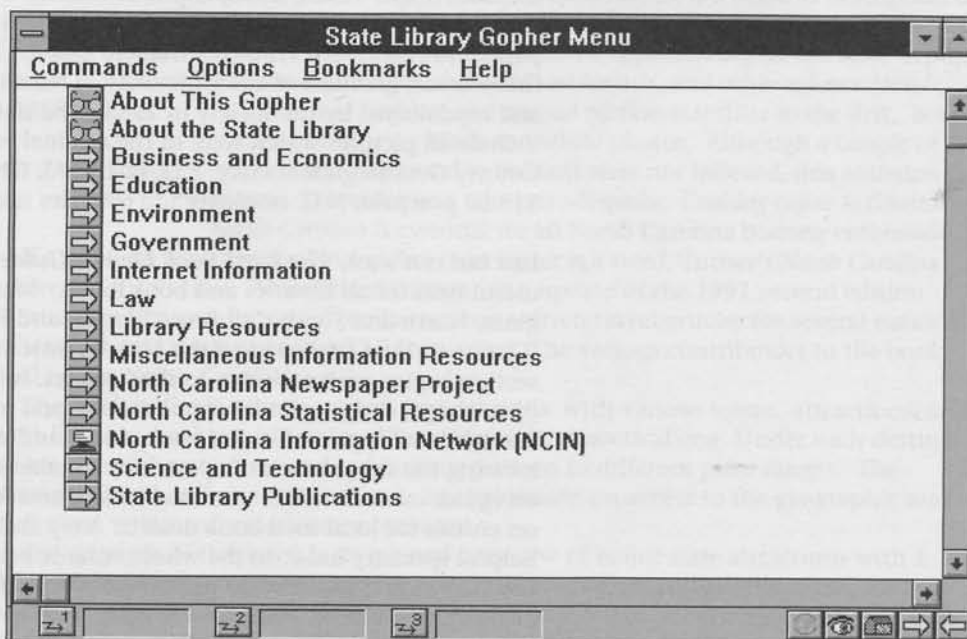
Gopher

Gopher is a client-server distributed information delivery system developed in 1991 by the University of Minnesota Microcomputer, Workstation, Networks Center. Its original focus was to facilitate the development of a Campus-Wide Information System (CWIS). It has grown to become a World-Wide Information System (WWIS) connecting thousands of

computers around the globe.

Gopherspace is the interconnected network of information accessible through gopher. In the gopher model, information is presented as a menu which can contain text, binary files, image files, or menus pointing to additional information.

Gopher menu items are actually links which, when selected, connect the user to information resources on the Internet. Gopher information is accessed by using a browser or client to connect to a server. This can be done by either telnetting (remote logon) to a host machine running a gopher client or by running a gopher client on your own PC. Any library with an account on an Internet host has access to a gopher client. PC-based gopher clients are available



*La•gniappe (län-yäp', län'yäp') n. An extra or unexpected gift or benefit. [Louisiana French]

free-of-charge at many sites on the Internet. Two of the most popular are HGopher, developed by Martyn Hampson at Imperial College, London, and PC-Gopher, developed by the University of Minnesota.

World Wide Web

The World Wide Web (WWW) is a distributed global hypermedia information system developed by CERN (European Laboratory for Particle Physics) in Geneva, Switzerland. Global hypermedia means that information located around the world is interconnected in an environment that allows you to move through the information by selecting what are known as hyperlinks — terms, icons, or images in documents that point to other related documents. Any hyperlink can point to any document anywhere on the Internet.

The World Wide Web seeks to integrate all of the different information-retrieval systems into a single, user-friendly interface. As with Gopher, World Wide Web servers are accessed using a browser, either by telnetting to a host running a browser program or by running a browser on your own PC. WWW browsers understand all of the existing information-retrieval protocols including Gopher, Telnet, FTP (File Transfer Protocol), NNTP (Network News Transfer Protocol), and WAIS (Wide Area Information Servers).

A WWW browser differs from Gopher in one major respect: it understands a new protocol named HTTP (Hypertext Transfer Protocol). Documents displayed by a WWW browser are hypertext documents. These documents

may include links or pointers to other documents, files, or objects. The browser provides for the display or transfer of text, binary files, graphic images, audio files, and video files.

PC-based WWW clients are also available free-of-charge at FTP sites on the Internet. Two of the most popular are NCSA Mosaic, developed by the National Center for Supercomputing Applications at the University of Illinois, and Cello, developed by the Cornell University Law School's Legal Information Institute.

The State Library's Internet Information Project is currently in the developmental stage. (See this issue's "& In Edition," pages 68-71) Information offered on both the Gopher and World Wide Web servers is in a state of flux and will be updated on a regular basis in order to maintain its accuracy and timeliness. Although the information offered on each server is similar, it differs in its presentation, as described above.

The project provides access to many information resources around the world as well as to specialized data products developed by the State Library. The following types of information are currently available: demographic and economic data (including North Carolina community and statewide profiles), education resources (K-12 and higher education), library catalogs, NATO and United Nations documents, North Carolina Information Highway (NCIH) documents, scientific and technological databases, U.S. and International legal documents, U.S. Government resources by agency, and U.S. Supreme Court decisions.

The screenshot shows the NCSA Mosaic for MS Windows browser window. The title bar reads "NCSA Mosaic for MS Windows". The menu bar includes "File", "Edit", "Options", "Navigate", "Annotate", "Starting Points", "Personal", and "Help". The toolbar contains icons for file operations and navigation. The address bar shows "Document Title: State Library of North Carolina Home Page" and "Document URL: http://hal.ncdcr.gov/ncslhome.htm". The main content area features a graphic with the text "Information you need... when you need it NORTH CAROLINA" and a "Welcome" message. A question mark icon is present, with the text "Last Updated on May 6, 1994." and "Click on the question mark for help or to see what's new." Below this is a paragraph of text: "The State Library serves government agencies, businesses, and, through cooperative programs with other libraries and organizations, all citizens of the state. With the State Library as your tour guide for the World Wide Web, you will discover treasure troves of information from places near and far. Sources are provided directly by the State Library and by sites all over the Internet. Enjoy your trip and return to the State Library home page often." The status bar at the bottom right shows "NUM".



ALA Membership Changes Lives

Need help with a censorship problem?

ALA's Office for Intellectual Freedom provides assistance when dealing with censorship and consultation on First Amendment issues. More than 600 librarians received help in 1993.

Membership features

- Complimentary subscription to *American Libraries*
- Up to 49% off registration fees at ALA conferences
- 10% discount on ALA Books and ALA Graphics
- Eligibility for ALA's travel, group insurance plans, credit card programs

Yes, I want to be an ALA ChangeLeader

Membership categories (please check)

- First-time Member \$38
- Student Member \$19
- Foreign Librarian \$45
- Renewing Member \$75
- Non-salaried or Retired Member \$26
- Trustee & Associate Member \$34

Name _____

Home Address _____

City _____ State _____ Zip Code _____

Home Telephone _____

Place of Employment/School _____ Position _____

Address _____

City _____ State _____ Zip Code _____

Telephone _____

Send mail to: Home Work

Enclosed is my check for \$ _____

Charge my dues of \$ _____ to my

VISA MasterCard American Express

Card Number _____ Exp. Date _____

Signature _____

If you are using this form to renew your membership, please enter your ALA Membership Number here

Mail entire ad to: Membership Services, American Library Association, 50 East Huron Street, Chicago, IL 60611

55

LIBRARIES CHANGE LIVES

TAB BOOKS

Current and Backlist
Titles Available

43% DISCOUNT

No Minimum Order
Free Freight

CURRENT EDITIONS

858 Manor St.
P.O. Box 4031
Lancaster, PA 17604
F. James Dantro
Sales Representative

Tel. Order 1-800-729-0620
Fax Order 1-800-487-2278

Instructions for the Preparation of Manuscripts for North Carolina Libraries

1. **North Carolina Libraries** seeks to publish articles, materials reviews, and bibliographies of professional interest to librarians in North Carolina. Articles need not be necessarily of a scholarly nature, but they should address professional concerns of the library community in the state.
2. Manuscripts should be directed to Frances B. Bradburn, Editor, **North Carolina Libraries**, Media and Technology, State Dept. of Public Instruction, 301 N. Wilmington St., Raleigh, NC 27601-2825.
3. Manuscripts should be submitted in triplicate on plain white paper measuring 8 1/2" x 11" and on computer disk.
4. Manuscripts must be double-spaced (text, references, and footnotes). Macintosh computer is the computer used by **North Carolina Libraries**. Computer disks formatted for other computers must contain a file of the document in original format and a file in ASCII. Please consult editor for further information.
5. The name, position, and professional address of the author should appear in the bottom left-hand corner of a separate title page. The author's name should not appear anywhere else on the document.
6. Each page should be numbered consecutively at the top right-hand corner and carry the title (abbreviated if necessary) at the upper left-hand corner.
7. Footnotes should appear at the end of the manuscript. The editors will refer to *The Chicago Manual of Style*, 13th edition. The basic forms for books and journals are as follows:

Keyes Metcalf, *Planning Academic and Research Library Buildings* (New York: McGraw, 1965), 416.

Susan K. Martin, "The Care and Feeding of the MARC Format," *American Libraries* 10 (September 1970): 498.
8. Photographs will be accepted for consideration but cannot be returned.
9. Upon receipt, a manuscript will be acknowledged by the editor. Following review of the manuscript by the editor and at least two jurors, a decision will be communicated to the writer. A definite publication date cannot be given since any incoming manuscript will be added to a manuscript bank from which articles are selected for each issue.
10. **North Carolina Libraries** holds the copyright for all accepted manuscripts. The journal is available both in print and electronically over the North Carolina Information Network.
11. Issue deadlines are February 10, May 10, August 10, and November 10. Manuscripts for a particular issue must be submitted at least 2 months before the issue deadline.

SOUTHEASTERN LIBRARY ASSOCIATION REPRESENTATIVE

Election and Term of Office:

Must be personal member of SELA and NCLA in order to be nominated. Elected in a special election every four years as specified by SELA. Four-year term begins at next Southeastern Library Association biennial conference

SELA REPRESENTATIVE

Duties:

1. To serve as member of SELA Executive Board
2. To represent NCLA at meetings of the SELA Executive Board
3. To attend President's Meeting immediately preceding each biennial conference
4. To attend President's/Leadership Conference in March of each non-conference year
5. To serve on NCLA Executive Board as voting member
6. To provide reports to NCLA Executive Board and the membership of NCLA
7. To act as liaison between SELA and NCLA

Candidates for SELA Representative:

— Nancy Clark Fogarty —

Currently Head Reference Librarian
Walter Clinton Jackson Library
University of North Carolina at Greensboro.

Education:

B.A., University of North Carolina at Greensboro;
M.S.L.S., University of North Carolina at Chapel Hill;
M.A., University at North Carolina at Greensboro.

Professional Activities:

Member of Southeastern Library Association; North Carolina Library Association; Reference and Adult Services Section of the North Carolina Library Association; College and University representative to Executive Board, and past chair. Member Beta Phi Mu, Epsilon Chapter; Alumni Association, School of Library Science, University of North Carolina at Chapel Hill, served as former President and Vice-President.

— Rex Klett —

Currently Director of Learning Resources
Mitchell Community College
Statesville, North Carolina

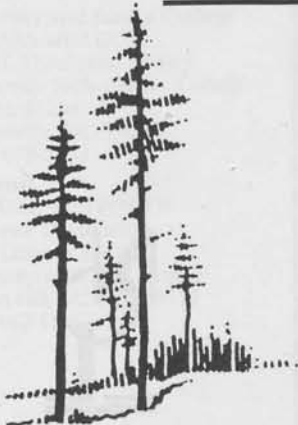
Formerly Anson County Library Director/Regional
Technical Services Consultant for Sandhill Regional
Library System, Rockingham, North Carolina.

Education:

B. A., Eckerd College, St. Petersburg, Florida;
M.A., University of Denver;
M.L.S., University of North Carolina at Chapel Hill.

Professional Activities:

Member of North Carolina Library Association; American Library Association; NCCCLRA; Metrolina Library Association; Co-editor of *MsManagement*, (newsletter for the NCLA Roundtable on the Status of Women in Librarianship); Chairperson of District V, North Carolina Community College Learning Resources Association.



Thorndike Press Large Print Books

P.O. Box 159, Thorndike, ME 04986

800/223-6121

Fax: 207/948-2863

Ben Byrd

104 Big Oak Circle, Madison, AL 35758

205/837-1891